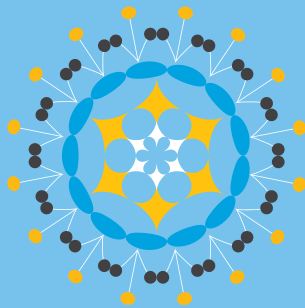




Program Services Guide

*Connecting cancer patients
with tomorrow's cures today.*





A little inspiration goes a long way.

Mike Miller is the inspiration behind Lazarex Cancer Foundation. His courageous battle with pancreatic cancer and the challenges he faced during his quest for life revealed the gap that exists in cancer care for end stage patients. This gap is being bridged by Lazarex today while we focus on sustainably filling it tomorrow.

*It is our vision that everyone affected
by cancer will have hope, dignity,
support and the most advanced
treatments made available.*



ABOUT US

History Lazarex Cancer Foundation was founded by Dana Dornsife in 2006 in response to a family experience with the challenges of an advanced stage cancer diagnosis. In 2003, Dana's brother-in-law Mike was diagnosed with pancreatic cancer. Dana searched for clinical trial options that would give Mike additional time with his wife Erin and their 3 young children. Mike responded well to his trial, living long enough to help his sons prepare for their future and for his daughter to remember him. He lived 19 months instead of the projected 3 months he was given.

Since then Lazarex has tirelessly advocated to remove the barriers to clinical trial participation on behalf of cancer patients who have been failed by standard of care and have lost hope.

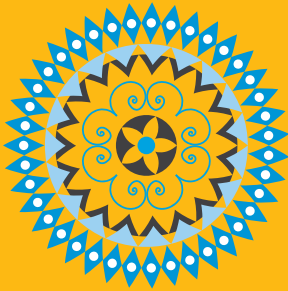
Mission At Lazarex Cancer Foundation we improve patient access to cancer clinical trials.

Vision The vision of Lazarex Cancer Foundation is that everyone affected by cancer will have hope, dignity, support and the most advanced treatments made available to them at all stages of their journey.

Fighting cancer a second time.

The cancer came back. This is when her relationship with Lazarex began.

Transportation to clinical trials gets expensive quickly. Luckily, Lazarex was there to provide much needed help. Lazarex supported Crystalyn's frequent trips from California to Pennsylvania for treatment in clinical trials. We are grateful for the opportunity to help her and for the impact she has made on us.



We believe that all patients, regardless of their finances, deserve the opportunity to take advantage of the latest discovery offered in clinical trials.



\$1.25 **a day** fuels a patient
with hope **with funds for gas, tolls**
and parking for an entire year.

WE CAN HELP

Who We Are Lazarex Cancer Foundation is a publicly funded 501(c)(3) nonprofit organization dedicated to improving the outcome of cancer care for advanced stage cancer patients and the medically underserved. Lazarex assists patients across the United States, with all types of cancer, from all walks of life and all ages with a particular focus on helping those who are most vulnerable. Lazarex strives to create a sustainable platform of equitable and inclusive access to medical discovery for all cancer patients.

What We Do At Lazarex Cancer Foundation we connect cancer patients to tomorrow's cures today! We remove access barriers to clinical trials for all patients by providing assistance with out of pocket costs for FDA clinical trials, identifying clinical trial options, and participating in community outreach and engagement.

How We Work We believe that all patients, regardless of their finances, deserve the opportunity to take advantage of the latest discovery offered in clinical trials. We work with patients and cancer treatment centers nationwide and get patients where they need to be – when they need to be there – restoring hope and helping patients say “YES” to treatments that can extend or save their lives.

Focus on health not
finances.

In 2012, Michael became a candidate for surgery after the cancer in his body responded to the clinical trial medicine he was receiving. "As long as Lazarex has the funds to continue helping, I can focus on my fitness rather than my finances. After all, the doctors state my fitness is what helps me tolerate the treatments better than most cancer patients." – Michael



*The Lazarex Care program bridges the
gap in care for cancer patients who are out of
treatment options and are seeking alternatives
through clinical trial participation.*



At Lazarex Cancer Foundation we connect cancer patients to tomorrow's cures today! We remove access barriers to clinical trials for all patients by providing assistance with out of pocket costs for FDA clinical trials, identifying clinical trial options, and participating in community outreach and engagement.

Clinical Trial Navigation Lazarex Cancer Foundation Patient Navigators search through clinical trial databases and identify FDA clinical trial options for patients based on their individual diagnosis, treatment history, physical condition, family situation and any other considerations that may affect their ability to participate in a trial.

Lazarex CARE PROGRAM

Financial Assistance Lazarex provides financial assistance for patients to participate in FDA clinical trials, helping with the related costs such as airfare, lodging, rental cars, gas, parking, etc. Lazarex also provides funding for a travel companion to give emotional and logistical support while a patient is in treatment, away from home, family and friends.

Financial assistance is provided for travel to and from clinical trial locations and covers the following travel expenses for the patient, and a companion, when needed:

Wings of Love: Reimbursement for flights.

Fueling Hope: Reimbursement for gas, parking and tolls when driving to a clinical trial location.

Home Away from Home: Reimbursement for lodging close to the clinical trial center.

Give Hope a Ride: Reimbursement for car rentals, taxis, shuttles, buses, train and car services.

Outreach and Engagement Through outreach to the medical community, Lazarex introduces our program services as a resource for their patients. We help make clinical trial participation an option for patients failed by industry standard treatment, who aren't ready to give up and are seeking alternatives.

Lazarex offers information to the public, especially the medically underserved and minority communities, about clinical trial participation for those who want to remain engaged in their fight with cancer. We also address cancer basics for prevention and early detection to improve cancer health outcomes and increase survival rates.



Lazarex
CANCER FOUNDATION
iMPACT!
Improving Patient Access
to Cancer Clinical Trials

Patient participation in clinical trials has always been a challenge; 11% of trials never enroll a single patient and 37% are under enrolled. This delays the approval of drugs, increases development costs and most importantly prevents patients from taking advantage of medical breakthroughs in technology, which may be their only survival option.

11%

...of trials never enroll a patient

6% of eligible patients participate in trials and only 5% are racial or ethnic minorities. This negatively affects the assessment of the safety, efficacy and value of new treatments for all segments of our population.

6%

...of eligible patients participate in trials



Lazarex IMPACT PROGRAM

The Problem Patient participation is crucial to the successful completion of a trial. Obstacles to participation – primarily the out of pocket expenses – add to a patient’s financial burden at a time when they can least afford it, creating a barrier. While the Lazarex Care program helps patients access clinical trial treatments today, it does not sustainably remove the cost barrier that keeps patients out of clinical trials.

The Solution In 2013, Lazarex and #1 ranked Massachusetts General Hospital formed the Lazarex MGH Cancer Care Equity Program (now re-branded as IMPACT) and achieved a 29% increase in overall participation and doubled minority participation in cancer clinical trials in the 3 year study.

IMPACT (Improving Patient Access to Cancer Clinical Trials) is a Lazarex program that coordinates efforts amongst many stakeholders; academia, medicine, policymakers, industry, public health and community organizations. It will create a new standard to bring sustainable change to the status quo of clinical trial recruitment. IMPACT will increase patient enrollment, retention, minority participation, completion, and translational science – providing sustainable, equitable and timely patient access to cancer discovery.

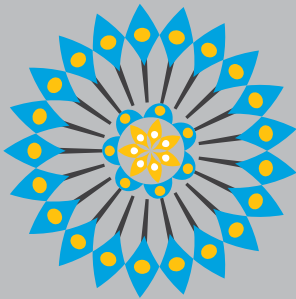
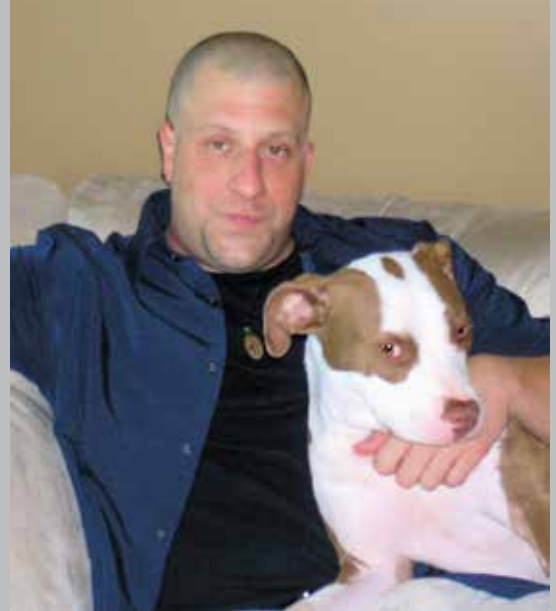
For a more detailed look at the IMPACT program please visit <https://www.lazarex.org/impact>



IMPACT Founding Sponsor

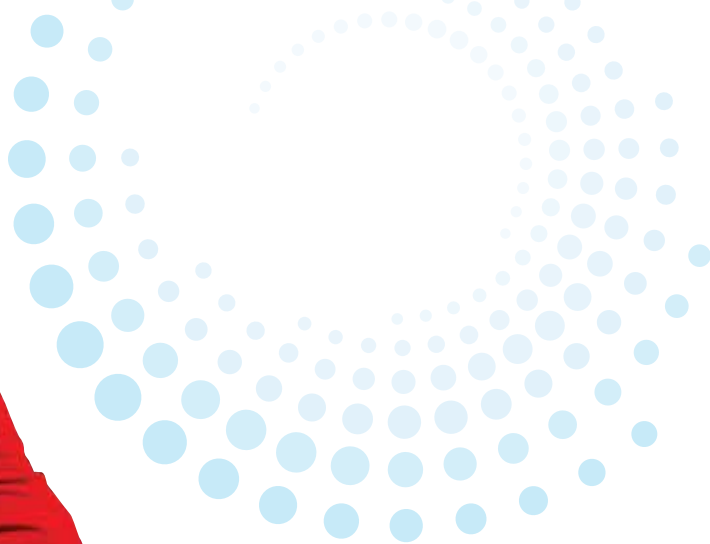
Giving back can be the
best medicine.

Carol and Ron Zenaro lost their son
Scott (pictured right) after 34 precious
months in a clinical trial. Since then they
have raised over \$100,000 by selling
bracelets that Carol makes by hand
(pictured far right). The Zenaros have
become part of the Lazarex family.



We can't do what we do alone.

*Whether you donate your time, talent,
treasure or in-kind products and services,
we are grateful for whatever you can give.*



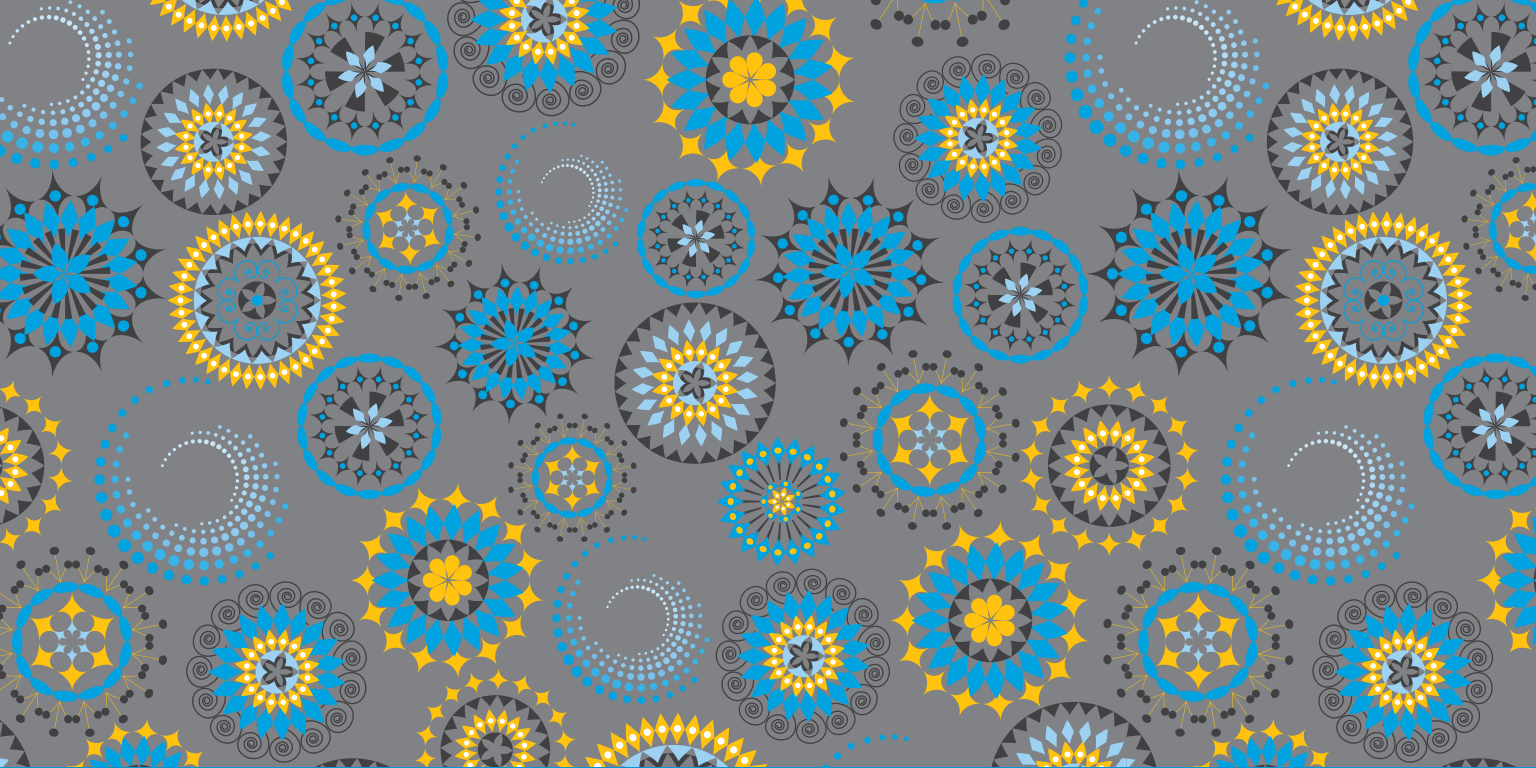
HOW YOU CAN HELP

Donate All gifts are welcome. Join our “You Can Help” campaign to become a recurring donor. Your monthly gift will help cancer patients say YES to treatment that can extend or save their lives.

Volunteer We need compassionate, enthusiastic and reliable volunteers! We have numerous volunteer opportunities available for many ages and skill levels; from serving on our Board or Advisory Council to helping with some of our fundraising events or office related projects. To learn more please contact us by e-mail at Info@Lazarex.org or telephone at 925.820.4517.

Participate Join us in one of our fundraising events or create your own! Go to www.lazarex.org to learn more about our annual fundraisers, or if you can’t attend a Lazarex fundraiser you can join **Cancer Busters**, our DIY fundraising program that can be done anywhere you happen to be.

Donate online at www.lazarex.org or mail your check to: Lazarex Cancer Foundation, P.O. Box 741, Danville, CA 94526. Your donations are tax-deductible and we provide you with a receipt. Our tax identification number is 20-2562494.



PO Box 741
Danville, CA 94526-0741

925.820.4517
925.552.7305 fax

www.lazarex.org

